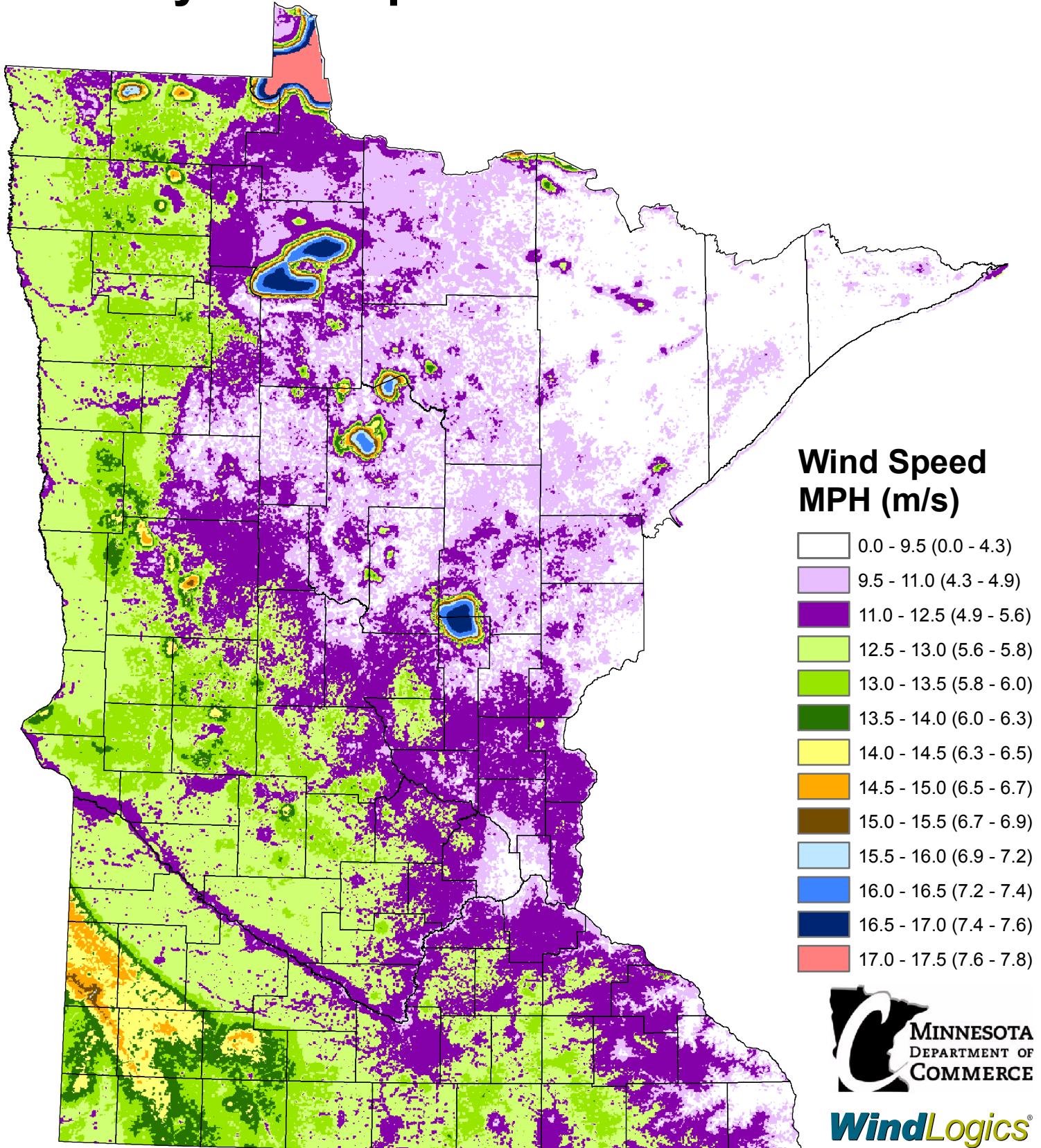


Minnesota's Wind Resource by Wind Speed at 30 meters



This map has been prepared under contract by WindLogics for the Department of Commerce using the best available weather data sources and the latest physics-based weather modeling technology and statistical techniques. The data that were used to develop the map have been statistically adjusted to accurately represent long-term (40 year) wind speeds over the state, thereby incorporating important decadal weather trends and cycles. Data has been averaged over a cell area 500 meters square, and within any one cell there could be features that increase or decrease the results shown on this map. This map shows the general variation of Minnesota's wind resource and should not be used to determine the performance of specific projects.

January 2006